



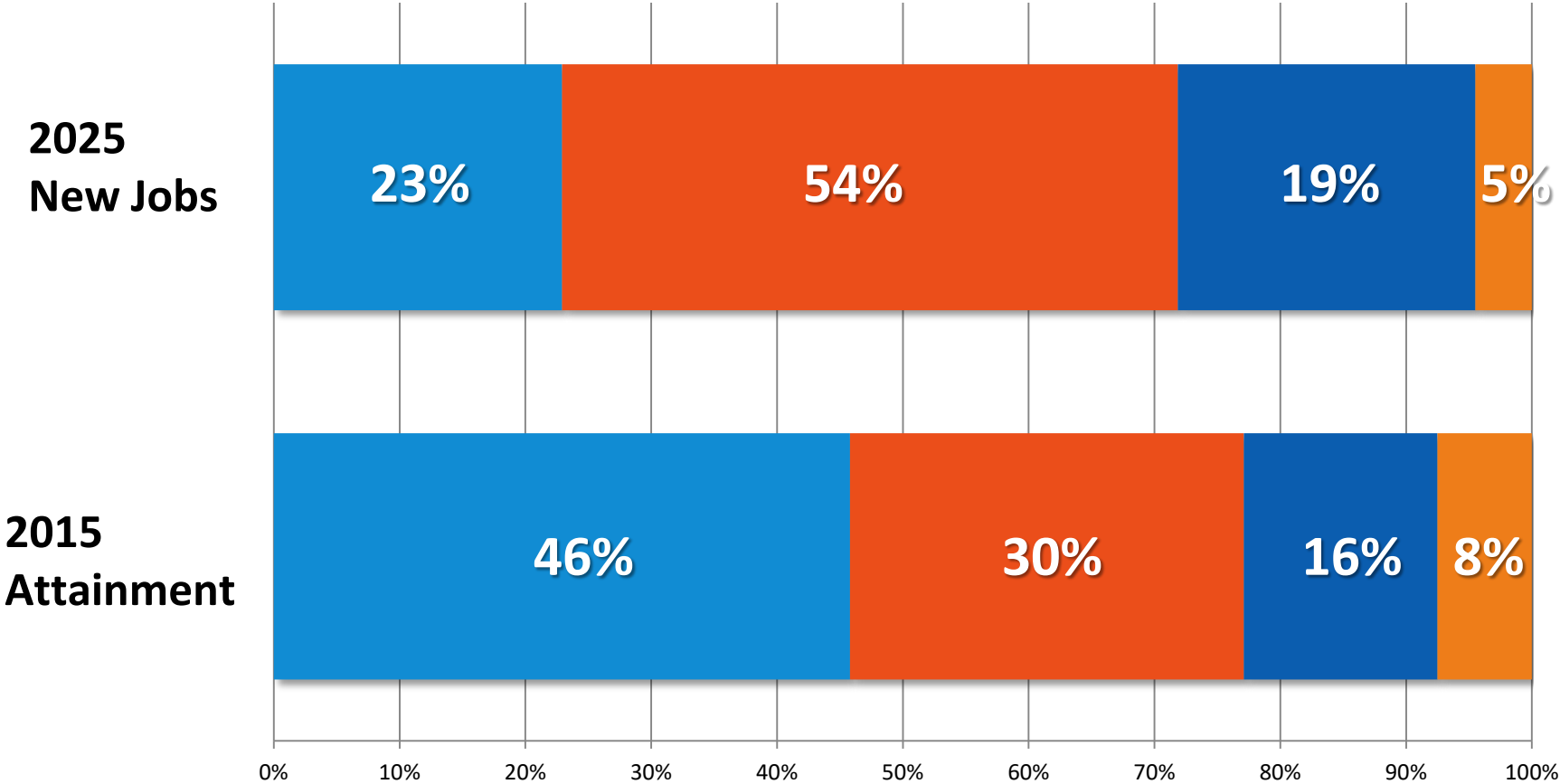


OKLAHOMA
WORKS

**Education and Training for
Tomorrow's Jobs**

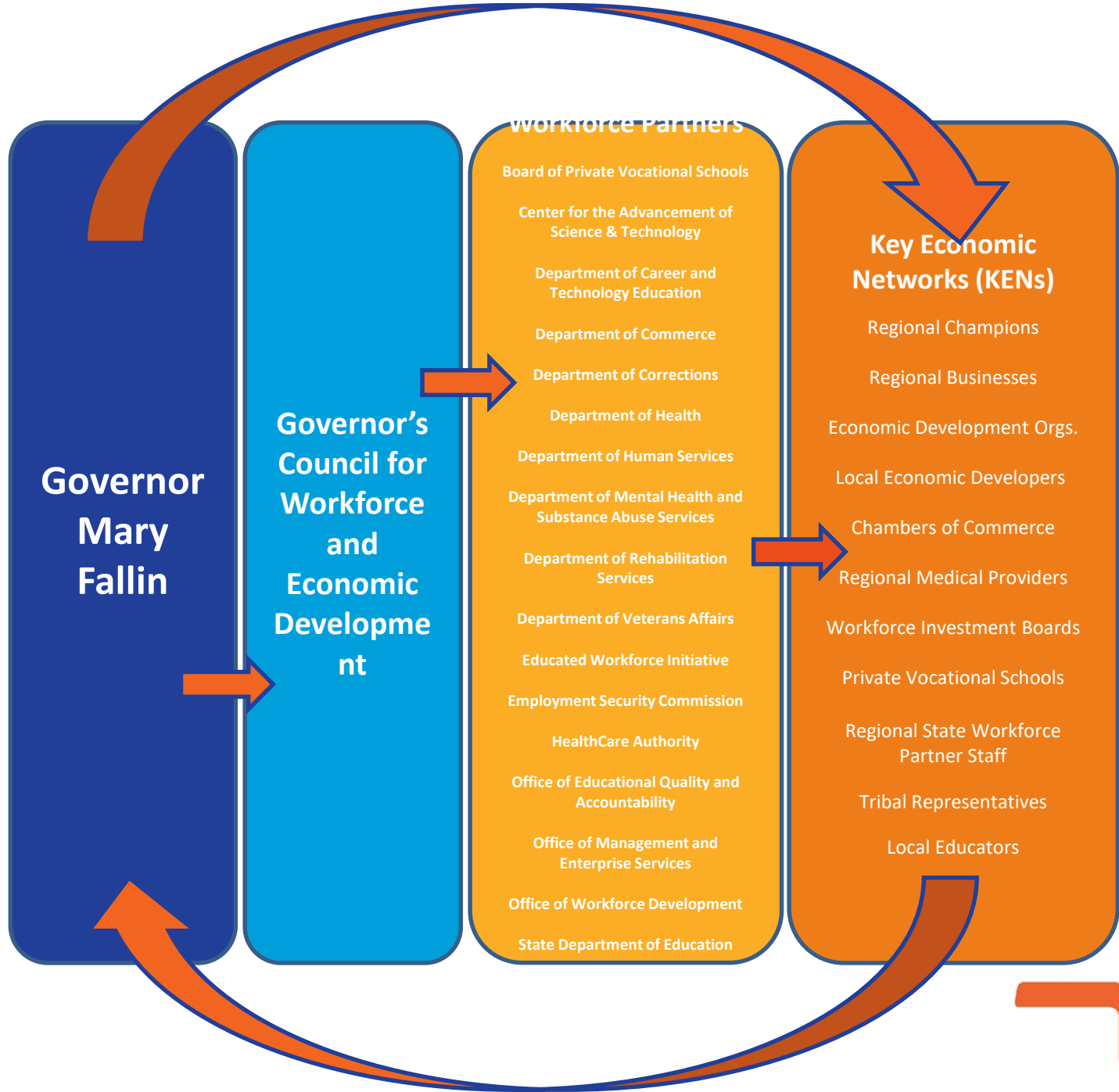
OK's Educational Gap for New Jobs

- High School Degree and less
- Bachelor's Degree
- Some college/Vocational/Associate's Degree
- Post Bachelor's Degree



Source: Oklahoma Office of Workforce Development, EMSI Q2 2015





**Governor
Mary
Fallin**

**Governor's
Council for
Workforce
and
Economic
Development**

Workforce Partners

- Board of Private Vocational Schools
- Center for the Advancement of Science & Technology
- Department of Career and Technology Education
- Department of Commerce
- Department of Corrections
- Department of Health
- Department of Human Services
- Department of Mental Health and Substance Abuse Services
- Department of Rehabilitation Services
- Department of Veterans Affairs
- Educated Workforce Initiative
- Employment Security Commission
- HealthCare Authority
- Office of Educational Quality and Accountability
- Office of Management and Enterprise Services
- Office of Workforce Development
- State Department of Education

**Key Economic
Networks (KENs)**

- Regional Champions
- Regional Businesses
- Economic Development Orgs.
- Local Economic Developers
- Chambers of Commerce
- Regional Medical Providers
- Workforce Investment Boards
- Private Vocational Schools
- Regional State Workforce Partner Staff
- Tribal Representatives
- Local Educators



Ecosystems

Driver Systems

- Aerospace & Defense
- Agriculture & Bio
- Energy
- Information & Financial Services
- Transportation & Distribution

Complementary Systems

- Construction
- Health Care
- Education
- Creative Industries



Home / Prosperous Citizens & Thriving Economy / Wealth Generation



Prosperous Citizens and Thriving Economy

Wealth Generation

Refers to the efforts made by the State of Oklahoma to increase and support the wealth of its citizens and to generate wealth within the state.

PER CAPITA PERSONAL INCOME

TODAY **93.51**
percent

Increase the per capita personal income as a percentage of the national average from 93.51% in 2013 to 98.20% by 2017.

TARGET **98.20**
percent

MEDIAN HOUSEHOLD INCOME

TODAY **45,690**
dollars

Increase the state median household income from \$45,690 in 2013 to \$51,424 by 2017.

TARGET **51,424**
dollars

INCOME POVERTY RATE

TODAY **16.8**
percent

Decrease the state income poverty rate from 16.8% in 2013 to 15.3% by 2017.

TARGET **15.3**
percent





Job Seekers & Employees

Businesses & Employers

Communities & Partners

Military & Veterans

Building Oklahoma's Workforce.

Oklahoma Works brings all of our state's workforce resources together, connecting employers, employees and job-seekers to information and programs that help build Oklahoma's workforce.

[LEARN MORE](#)

