



march 12-14, 2024  
pittsburgh, pa

# rivers of knowledge

**UI SIDES Seminar**

**#UISIDES2024**

# GREETINGS!

Welcome to Pittsburgh, Pennsylvania  
– the Steel City!

We are so excited that you are here  
for the 2024 NASWA SIDES Seminar!

This year, state workforce staff, employers, and third-party administrators will discuss current and developing trends in the unemployment program and how utilizing SIDES can enhance integrity measures, streamline claims processing, and reduce operational costs. Through these sessions, you will have the opportunity to take advantage of networking and learn how others have used SIDES to improve program outcomes and operations.

After seeing and hearing from experts from within and outside of the government, I think you will agree that their knowledge and innovative ideas are valuable resources to apply to the challenges and opportunities that you face in your programs. Providing such value to our NASWA members and partners remains a key priority for 2024!

Let me convey my sincerest appreciation to our speakers, our agency coordinators, NASWA board members, and NASWA staff! Without their efforts, this wonderful program would not have become a reality. On behalf of my colleagues at the Pennsylvania Department of Labor & Industry, we hope you enjoy the program and your visit!

*Sincerely,*



**Nancy Walker**

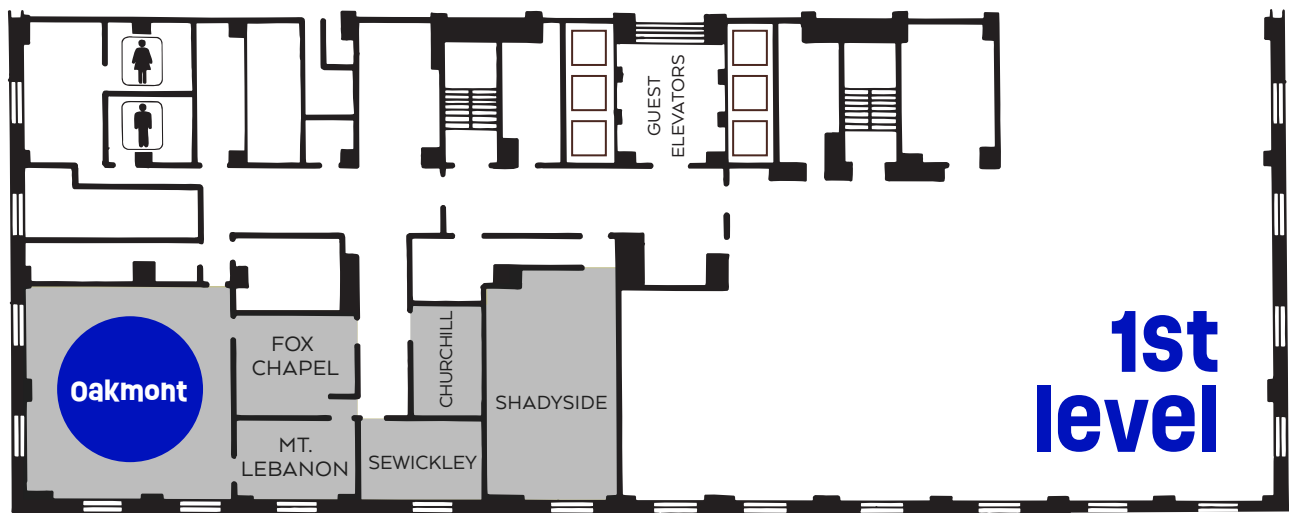
Secretary, Pennsylvania Department  
of Labor & Industry



# thank you to our sponsors



# 17th level



# 1st level

## Check in at the **HOSPITALITY DESK** to receive your **NAME BADGE!**

All attendees will  
be *required* to  
have a name  
badge to  
attend sessions  
& meals.



[qrco.de/2024SIDESSpeakers](https://qrco.de/2024SIDESSpeakers)



**Scan here or visit  
the url to view the  
Speaker Bio Page!**

# MONDAY, MARCH 11

5:00 - 7:00p

Grand Ballroom Foyer 17th Level

## **Hospitality Desk**

Pick up your name badges to attend all sessions.

# TUESDAY, MARCH 12

10:00a - **Hospitality Desk** Grand Ballroom Foyer 17th Level  
6:30p Pick up your name badges to attend all sessions.

8:30a - **UI Committee Meeting** Bob and Dolores Hope (Mezannine Level)  
5:00p

11:00a - **Exhibitor Set-Up** Sky Room 17th Floor  
4:30p

1:00p **Pre-Con Workshop**  
**Meet our Crew: NASWA Services Overview** Grand Ballroom 17th Level

2:00p **Break**

2:15p **Pre-Con Workshops**  
**Rollin' on the River with BTQ: Tributary 1** Grand Ballroom 17th Level

**IDH 101: Who Wants to be an IDH Millionaire** Monongahela 17th Level

3:30p **Beverage & Networking Break**

3:45p **Pre-Con Workshops**  
**Rollin' on the River with BTQ: Tributary 2** Grand Ballroom 17th Level

**Sailors Guild: TPA Discussions** Monongahela 17th Level

5:00- **Welcome Reception with Exhibitors** Sky Room & 17th Level Corridor  
6:30p

# WEDNESDAY, MARCH 13

7:30a - 5:00p **Hospitality Desk** Grand Ballroom Foyer 17th Level  
Pick up your name badges to attend all sessions.

7:30 - 8:30a **Breakfast** See page 15  
On your own: Hotel Lobby Eateries & restaurants in area

7:30a - 5:00p **Exhibitor Showcase** Sky Room 17th Floor

8:30a **Opening Plenary Session** Grand Ballroom 17th Level  
with UI IB Training Attendees

## Welcome

**Michael Burke**, Director, Unemployment Compensation Bureau, New Hampshire Employment Security

**Kris Funk**, Unemployment Insurance Administrator, Wyoming Department of Workforce Services

## Pennsylvania Welcome

**Nancy Walker**, Secretary, Pennsylvania Department of Labor & Industry

## NASWA Welcome

**Scott B. Sanders**, President & CEO, NASWA

## USDOL Update

**Michelle Beebe**, Deputy Administrator, Office of Unemployment Insurance, USDOL

## Keynote Speaker

sponsored by

**Scotty Gunther** "The Co-Worker Challenge"



10:15a **Beverage & Networking Break**

10:45a **Plenary Session** Grand Ballroom

**Captain's Log: State of the States**

**Hands-on Lab** Bedford 17th Level

**Cruising the River: E-Response**

# WEDNESDAY, MARCH 13

12:00 -  
1:15p

## Lunch

On your own: Hotel Lobby Eateries & restaurants in area

See page 15

1:15p

## Plenary Session

Grand Ballroom 17th Level

### NASWA Update

**Scott B. Sanders**, President & CEO, NASWA

### IB/SIDES Awards Ceremony

2:30p

## Networking Break

2:45p

## Plenary Session

with UI IB Training Attendees

Grand  
Ballroom 17th

## Hands-on Lab

Bedford  
17th Level

### When Tributaries Unite: SIDES/ICON Connections during Modernization

### Taking the Helm: JAVA/ .NET Model Connectors

**MODERATOR** **Ben Peirce**, Vice President,  
Technology Services &  
Programs, NASWA

**PANELISTS** **Jorie Cummis**, CEO/COO, NSN  
Employer Services, Inc. and  
ValeU NSN, LLC

**Blake Dunham**, Technical  
Lead, ICON, NASWA

**Brett Flachsbarth**,  
Director, UI ITSC, NASWA

**Jerry Pectol**, Director, SIDES,  
NASWA

**Rich Siegel**, President,  
Unemployment Tax  
Management Corp/AUTO

3:45p

## Beverage & Networking Break

4:15p

## Concurrent Breakout Sessions

### Streams of Thought: State Roundtable

Monongahela 17th Level

### Streams of Thought: Integrated Partner Roundtable

Allegheny 17th Level

5:00p

## Adjourn Day 1



# THURSDAY, MARCH 14

7:30a -  
12:00p

## Hospitality Desk

Grand Ballroom Foyer 17th Level

7:30 -  
8:30a

## Breakfast

On your own: Hotel Lobby Eateries & restaurants in area

See page 15

7:30a -  
3:00p

## Exhibitor Showcase

Sky Room 17th Floor

8:30a

## Plenary Session

Grand Ballroom 17th Level

### Damming up Fraud

*MODERATOR* **Jennifer Bertrand**, SIDES Coordinator, Montana Department of Labor & Industry

*PANELISTS* **Jerome Lord**, IDH Support Team Manager, UI Integrity Center, NASWA

**Lauren Mann**, Director of Client Services and Program Management, Industrial U.I. Services

**Caroline Pratt**, Director, UI Integrity Division, Connecticut Department of Labor

9:30a

## Beverage & Networking Break

10:00a

## Concurrent Breakout Sessions

### Mapping the Course: POA Exchange

Grand Ballroom 17th Level

*MODERATOR* **Jerry Pectol**, Director, SIDES, NASWA

### Testing the Waters

Allegheny 17th Level

*MODERATOR* **Tyler Smith**, UI Technical Services Specialist, Idaho Department of Labor

*PANELISTS* **Melody Branigan**, Director, IT & Security, PeopleSystems NEC

**Jason Holzbach**, Director, AEM Corporation

**Shaun Meinert**, Business Analyst, Division of Unemployment Insurance, Wisconsin Department of Workforce Development

**Caleb Walker**, Business Analyst, Netacent Inc.

# THURSDAY, MARCH 14

## 10:00a **Concurrent Breakout Sessions (cont.)**

### **Virtual Rivers: Introduction to Artificial Intelligence and Cloud Solutions**

Oakmont 1st level

*MODERATOR* **David Zemel**, Director, Service Delivery Management – IT Services, Atos

*PRESENTERS* **Colin Lennox**, Director, Project Management Office, UI ITSC, NASWA

**KK Raghavan**, Technical Architect & Advisor, UI ITSC, NASWA

### **Hands-On Lab – Taking the Helm: JAVA/.NET Model Connectors - REPEAT**

Bedford 17th Level

## 11:00a **Networking Break**

## 11:15a **Concurrent Breakout Sessions**

### **Building Bridges: State/Integrated Partner Q&A Session**

Grand Ballroom 17th Level

*MODERATORS* **Emily Duncan**, Director, Client Administration, Questco  
**Nakia Thompson**, UI Technical Services Manager, South Carolina Department of Employment and Workforce

### **Embrace the Rapids: Technology Trends**

Allegheny 17th Level

*MODERATOR* **David Zemel**, Director, Service Delivery Management – IT Services, Atos

*PANELISTS* **Nick Carter**, Bureau Chief of Infrastructure and Operations, Iowa Workforce Development

**Danny Lee**, Leader, Labor and Workforce, AWS

**John Quichocho**, Product Manager, UI ITSC, NASWA

### **Hands-On Lab - Cruising the River: E-Response**

Bedford 17th Level

## 12:00 - 1:30p **Lunch**

On your own: Hotel Lobby Eateries & restaurants in area

See page 15

# THURSDAY, MARCH 14

## 1:30p **Concurrent Breakout Sessions**

### **All Aboard!**

Monongahela 17th Level

*MODERATOR* **Racquel Robinson**, UI Policy and Procedures Chief, Georgia Department of Labor

*PANELISTS* **Gregg Kallajian**, Operations Coordinator, Connecticut Department of Labor

**Whitney Swingle**, Employer Tax Services Assistant Manager, South Carolina Department of Employment and Workforce

**Katie Watkins**, VP of Product and Operations, VerifyToday

### **Wading Through the Appeals Waters**

Allegheny 17th Level

*MODERATOR* **Julie Squire**, Vice President of Policy & General Counsel, NASWA

*PANELISTS* **Jennifer Bertrand**, SIDES Coordinator, Montana Department of Labor

**Emily Duncan**, Director, Client Administration, Questco

**Candace Edens**, Director, Division of Unemployment Insurance Operations, USDOL

**Billy Rudnick**, HR - Manager of Unemployment Insurance, G&A Partners

### **Barging Forward: Technology Upgrades & Updates**

Oakmont 1st Level

*MODERATOR* **David Zemel**, Director, Service Delivery Management – IT Services, Atos

*PRESENTER* **Jason Holzbach**, Director, AEM Corporation

### **Hands-On Lab – Know the Ropes**

Bedford 17th Level

*PRESENTERS* **Bill Brueggeman**, Systems Automation Analyst, Wisconsin Unemployment Insurance

**Amanda Seagle**, UC Unit Supervisor, Alabama Department of Labor

## 2:30p **Beverage & Networking Break**

# THURSDAY, MARCH 14

3:00p **Plenary Session**

Grand Ballroom

Monongahela

**Hands-on Lab** Bedford

**All Hands on Deck!**

**Cruising through the IDH**

**Cruising the River: E-Response**

**MODERATOR** **Emily Duncan**, Director, Client Administration, Questco

**PRESENTERS** **Tameka Fontaine**, Unemployment Hearings Representative, Justworks

**David Harrod**, Alliance Relationship Manager, ADP

**Aaron Miller**, Business Analyst, Syndeo Outsourcing

3:00p **Exhibitor Tear Down**

Sky Room 17th Level

4:00p **Networking Break**

4:15p **Closing Plenary Session**

Grand Ballroom 17th Level

**Starting a Great Journey** (*Networking opportunity*)

**MODERATORS** **Emily Duncan**, Director, Client Administration, Questco

**Nakia Thompson**, UI Technical Services Manager, South Carolina Department of Employment and Workforce

5:00p **Conference Adjourned**

# FRIDAY, MARCH 15

8:30a - 12:00p **SIDES Operations Committee Meeting**

Monongahela  
17th Level

# SPONSOR EXHIBIT HALL

## **AWS Table 12**

Amazon Web Services (AWS) helps government customers deploy cloud services to reduce costs, drive efficiencies, and increase innovation across the globe. AWS has dedicated teams focused on helping our customers pave the way for innovation and, ultimately, make the world a better place through technology.

## **Career Edge Table 10**

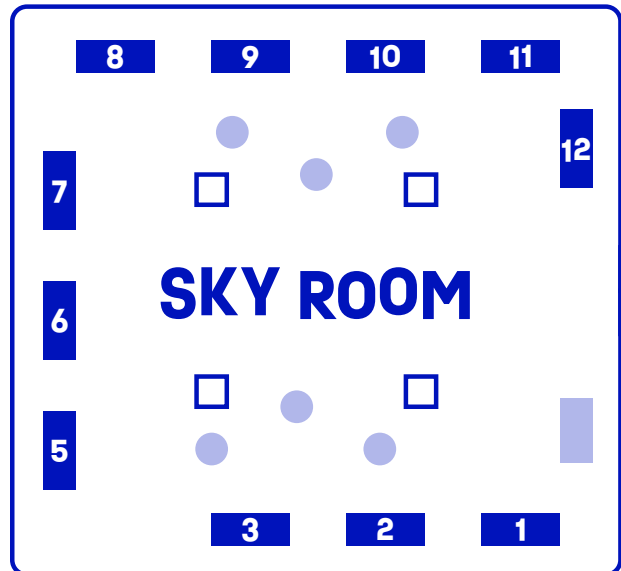
Career EDGE is an emerging leader in the Case Management System and Labor Exchange arena. Career EDGE prides itself on being the most innovative, cutting EDGE platform for states and workforce boards across the country. EDGE was built by workforce development experts from Career TEAM, a company who has served individuals and employers since 1996.

## **FAST Enterprises Table 7**

Fast Enterprises (FAST) has modernized systems for 95+ governments worldwide. Our highly flexible FastUI software is the complete solution for UI taxes, benefits, and appeals. We partner with unemployment agencies to optimize operations and automate services, while enhancing accessibility and usability for customers.

## **Geographic Solutions Table 1**

Geographic Solutions is the trusted provider of modernized software for state and local agencies in 40+ states and U.S. territories.



Their proven flagship products, VOS Sapphire, Reemployment Exchange, and Geographic Solutions Unemployment System have been responsible for stimulating reemployment, enhancing payment accuracy and fraud prevention, while preserving state trust funds.

## **Google Cloud Table 6**

## **ID Verse Table 5**

ID\Verse, the latest ally in the fight against unemployment (EDD) fraud, pioneers the most modern identity platform. Using generative AI, it validates nearly every ID document issued across 220 countries and 142 languages. As a proud member of the Federal Reserve's FedNow and trusted by industry leaders like Experian and HSBC, IDVerse sets the standard for secure, accurate identity verification.

### **Justworks Table 3**

Justworks is a professional employer organization that focuses on helping entrepreneurs and businesses grow with confidence. We do this with a simple and friendly platform, expert support from real people when it's needed, and access to corporate-level benefits that ensure people feel secure and valued.

### **NASWA's UI Information Technology Support Center Table 8**

UI ITSC provides information, software tools and products, and advisory services to states in support of information technology (IT) systems for the Unemployment Insurance program. This assists states in their efforts to enhance efficiencies and promote sharing and replication of successful UI models and practices. Visit [naswa.org/services/uiitsc](https://naswa.org/services/uiitsc)

### **NASWA's UI Integrity Center - Integrity Data Hub Table 9**

The IDH is a secure, multistate data system with advanced data cross-matching and analysis capability that detects and prevents UI fraud and improper payments. Designed to be easily accessible, the IDH supports states with varying levels of resources and technology. Participating states provide UI claims data and receive prioritized results for review and investigation. Visit [naswa.org/integrity-center/integrity-datahub](https://naswa.org/integrity-center/integrity-datahub)

### **Plextera Table 2**

Plextera empowers businesses with document automation technology. Our AI-powered automation platform ensures seamless integration into your business workflows, delivering unparalleled efficiency, accuracy, and scalability. Our SIDES Connectivity technology simplifies the onboarding, setup and testing steps, and streamlines data request processing across all active exchanges

### **Sagitec Solutions, LLC**

### **TrussWorks, Inc. Table 11**

# meals on your own

## Located in Hotel

### Terrace Room

Main Lobby • 412.553.5235

### Mellon Square

Main Lobby

### Tap Room

Grant Street Lobby • 412.553.7475

### Bruegger's Bagels

531 Grant Street • 412.471.9249

## Grab & Go

### Zio Vito

601 Grant Street • 412.586.4388

### Starbucks

600 Grant St • 412.765.3125

### Dunkin Donuts

601 Grant St • 412.281.4070

### Freshii

501 Grant Street • 412.430.0318

### Jimmy John's

501 Grant Street • 412.281.3474

### Arepittas

412-428 Cherry Way

### Five Guys Burgers and Fries

3 PPG Place • 412.227.0206

### Chipotle Mexican Grill

211 Forbes Avenue •  
412.224.5586

### Oxford Market

301 Grant St • 412.224.2988

### Primanti Bros. Restaurant

2 Market Square • 412.261.1599

### Hello Bistro

292 Forbes Avenue •  
412.434.0100

### Waffles, INCaffeinated

456 Fifth Avenue • 412.290.7801

### Einstein Bros. Bagels

436 Seventh Avenue •  
412.904.14